



## District Demographic Profile: Babergh

All data is sourced from Office of National Statistics (ONS).

The data sets provided cover a range of different periods and these are highlighted next to charts as appropriate.

Rounding of data may result in totals above or below the sum of presented data.

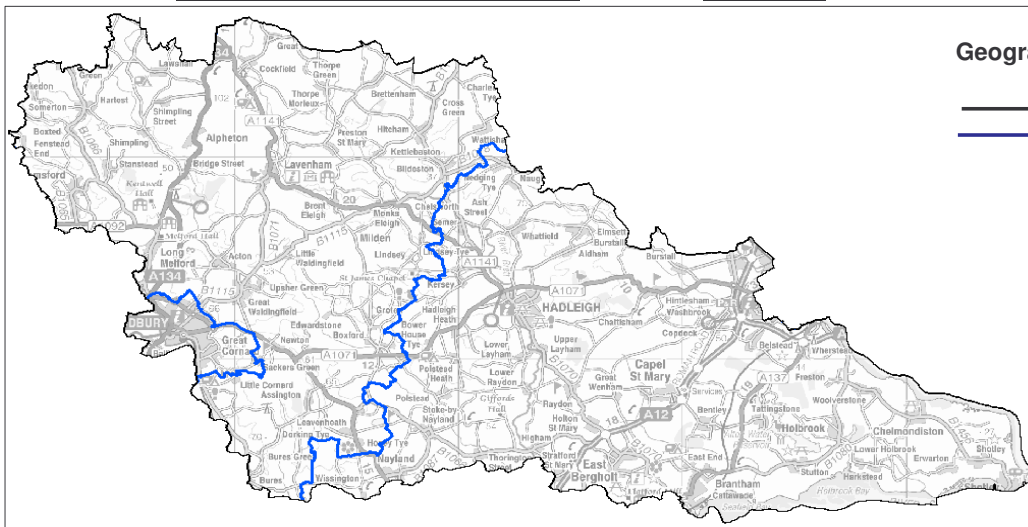
Super Output Areas refer to the smallest geographic area used by the ONS.

	Babergh	% County Total	Suffolk	
Population:	86,959	12%	715,661	Mid 2008 Estimate

### Geographic Area

	Babergh	Suffolk
Total Area:	594km <sup>2</sup>	3801km <sup>2</sup>
Population Density:	146	188
Large Town	33%	61%
Rural Town	33%	16%
Village/Rural	33%	23%

Rural and Urban Area  
Classification for Super  
Output Areas, 2004

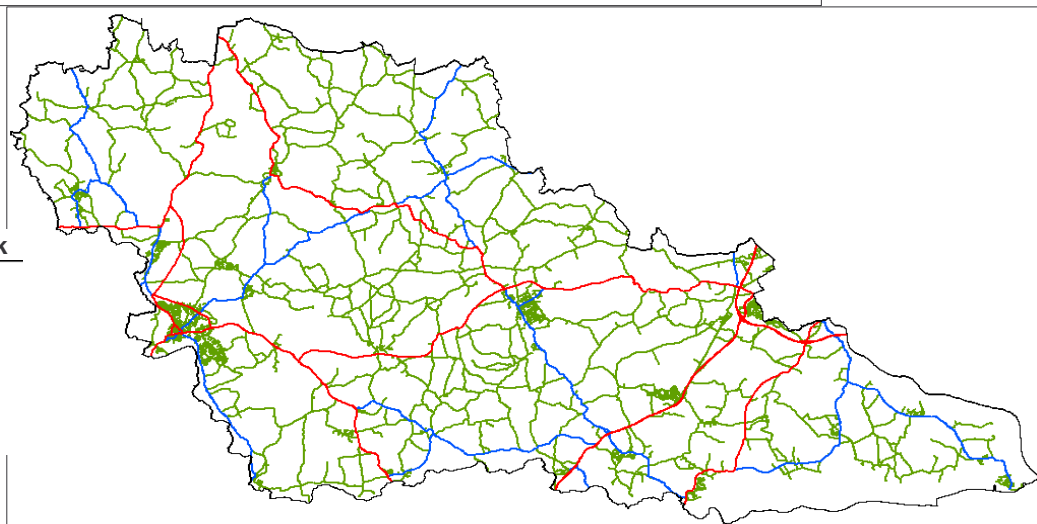


### Geographic Boundaries

- District Boundary
- SNT Boundary

### Road Network

- Minor Road
- B Road
- A Road



## Population Breakdown

### Gender

Mid 2007

	Babergh		Suffolk		East of England	
	Total	%	Total	%	Total	%
Male	42,200	48.7%	348,800	49.2%	2,778,200	49.1%
Female	44,500	51.3%	360,400	50.8%	2,882,500	50.9%
All residents	86,700		709,300		5,660,900	

### Self Defined Ethnicity

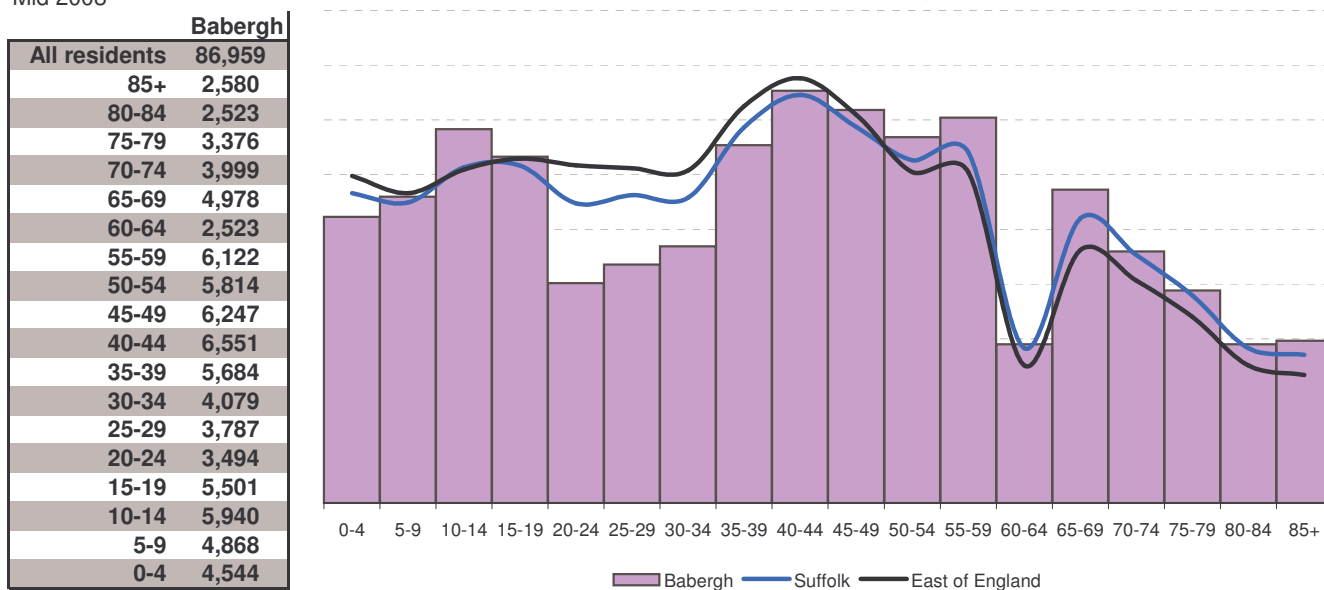
Mid 2007

	Babergh		Suffolk		East of England	
	Total	%	Total	%	Total	%
White	83,700	96.5%	669,500	94.4%	5,186,900	91.6%
Mixed	900	1.0%	10,800	1.5%	87,500	1.5%
Asian or Asian British	900	1.0%	13,000	1.8%	203,400	3.6%
Black or Black British	800	0.9%	9,300	1.3%	109,200	1.9%
Chinese or Other Ethnic Group	600	0.7%	7,400	1.0%	74,600	1.3%
All Ethnic Groups	86,700		709,300		5,660,900	

### Age

Mid 2008

Breakdown of Age - Comparison



### Disability Benefits Claimants

Mid 2008

	Babergh		Suffolk		East of England	
	Total	%	Total	%	Total	%
Disability Living Allowance	2,940	3.4%	28,910	4.0%	215,215	3.8%
Incapacity Benefit	2,150	2.5%	21,435	3.0%	181,110	3.2%
All residents	86,959		715,661		5,728,656	

## Population Breakdown

### Same Sex Couples

2001 census

	Babergh		Suffolk		East of England	
	Total	%	Total	%	Total	%
People Aged 16+	66,077		524,580		4,218,352	
Living in a same-sex couple	108	0.2%	804	0.2%	6458	0.2%

### Religion

2001 census

	Babergh		Suffolk		East of England	
	Total	%	Total	%	Total	%
Christian	63,036	75.5%	494,608	74.0%	3,886,778	72.1%
Buddhist	137	0.2%	1,167	0.2%	11,994	0.2%
Hindu	47	0.1%	913	0.1%	31,462	0.6%
Jewish	88	0.1%	630	0.1%	30,338	0.6%
Muslim	126	0.2%	2,619	0.4%	78,978	1.5%
Sikh	6	0.0%	430	0.1%	13,359	0.2%
Other religions	214	0.3%	1,825	0.3%	15,330	0.3%
No religion	13,641	16.3%	111,163	16.6%	902,143	16.7%
Religion not stated	6,143	7.4%	55,110	8.2%	417,631	7.8%

### Ethnicity By Gender and Age

2007 Mid Point

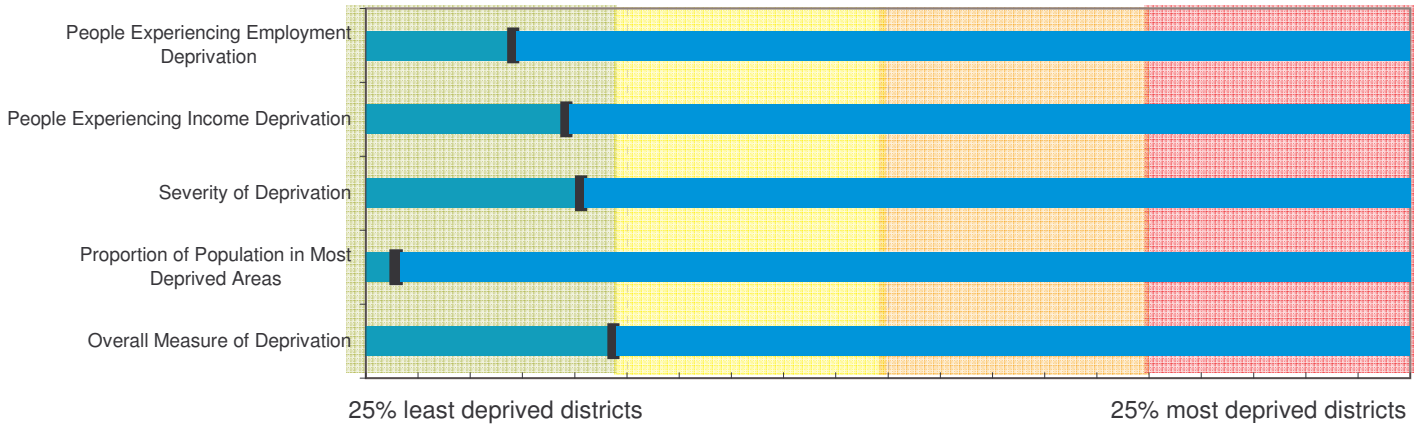
	Total	Gender		Age		
		Male	Female	0-15	16-59/64	60/65+
White	83,700	40,700	43,000	15,700	47,900	20,100
Mixed	900	400	400	400	400	0
Asian or Asian British	900	400	400	200	600	100
Black or Black British	800	400	400	200	500	100
Chinese or Other Ethnic Group	600	200	300	100	500	0
All residents	86,700	42,200	44,500	16,600	49,800	20,300

% Breakdown of Ethnicity by Gender and Age



## Deprivation

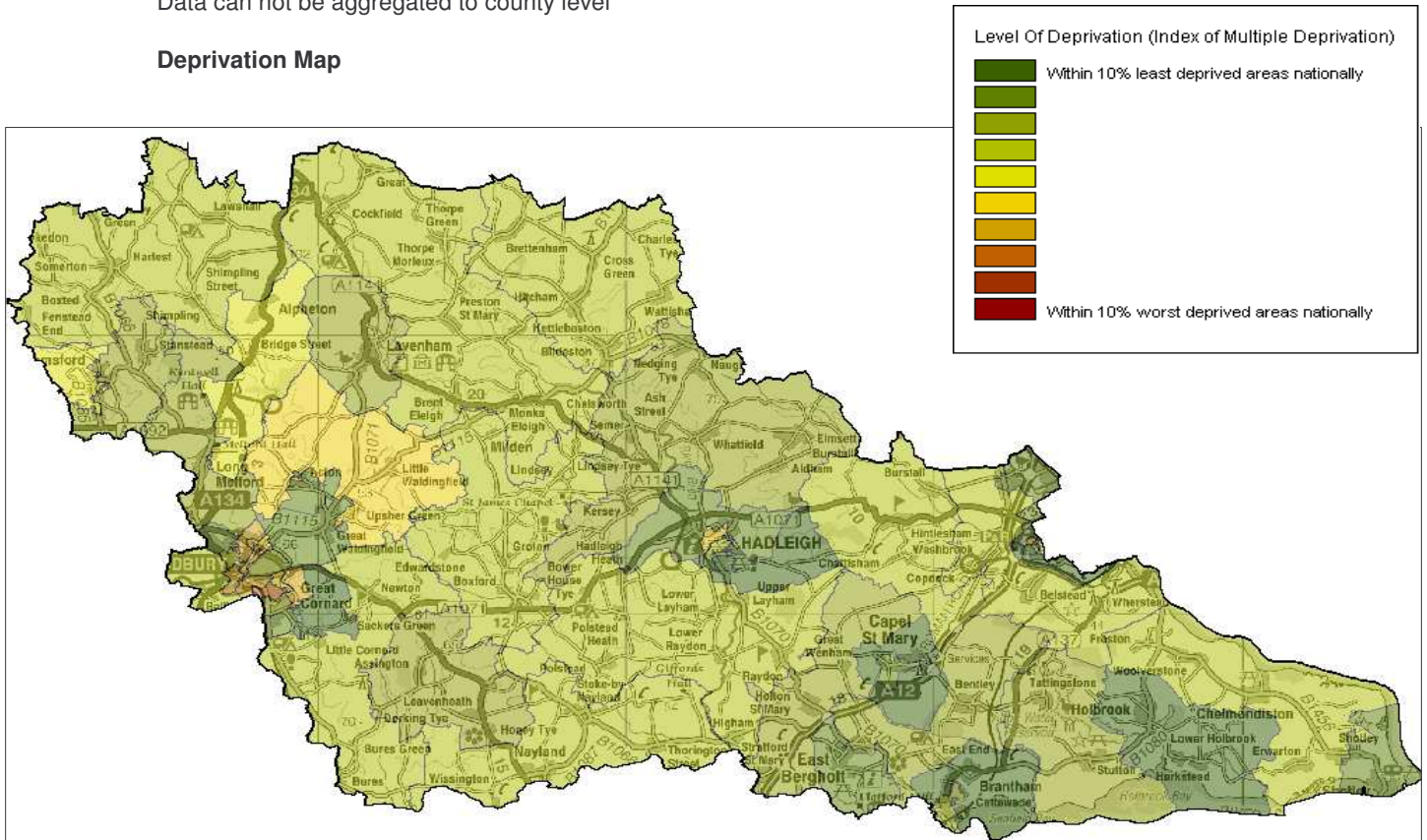
### Indicators of Deprivation



### Indices of Deprivation 2007

Data only available for individual Local Authority areas.  
Data can not be aggregated to county level

### Deprivation Map

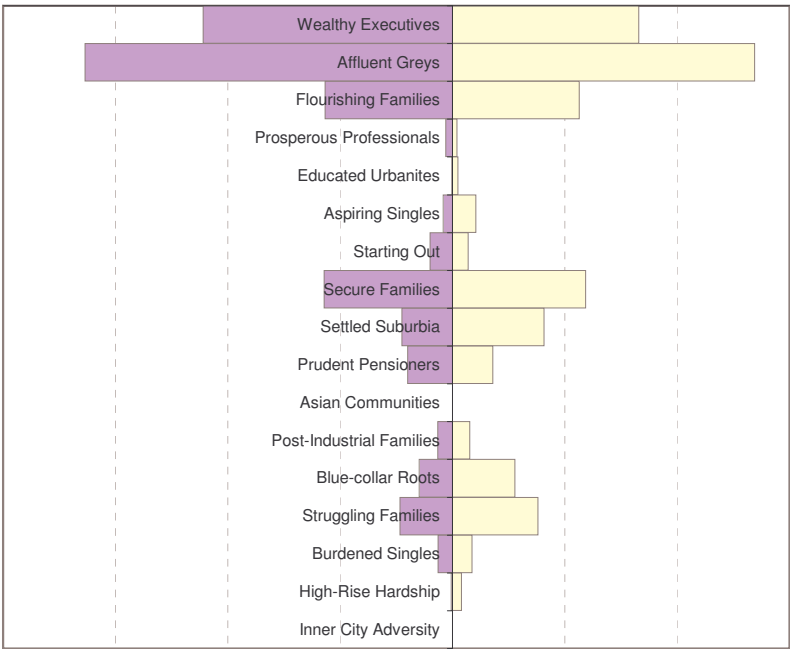
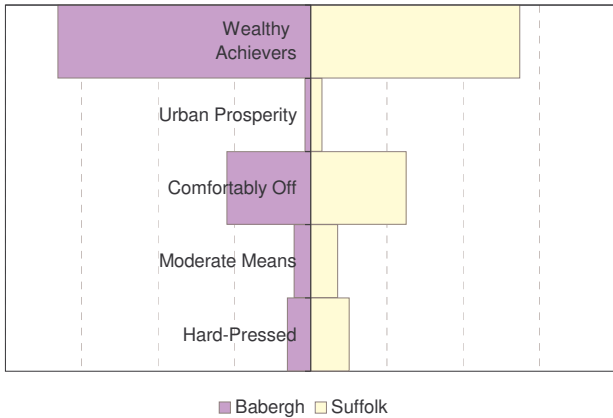


### Socio-economic Classification - % of Economically Active Population

2001 Census

	Babergh	Suffolk	East Of England
Large employers and higher managerial occupations	4%	3%	4%
Higher professional occupations	5%	4%	5%
Lower managerial and professional occupations	20%	18%	20%
Intermediate occupations	9%	9%	10%
Small employers and own account workers	10%	8%	8%
Lower supervisory and technical occupations	8%	8%	7%
Semi-routine occupations	12%	13%	12%
Routine occupations	9%	10%	9%
Never worked	1%	1%	2%
Long-term unemployed	1%	1%	1%
Full-time students	5%	5%	6%
Not classifiable for other reasons	18%	19%	17%

# Socio-Demographic Profile



Socio-Demographic profiles are based on ACORN classification of postcodes. For more detail on the groupings go to <http://www.caci.co.uk/acorn/> or contact PMU

## Map of ACORN Classifications

